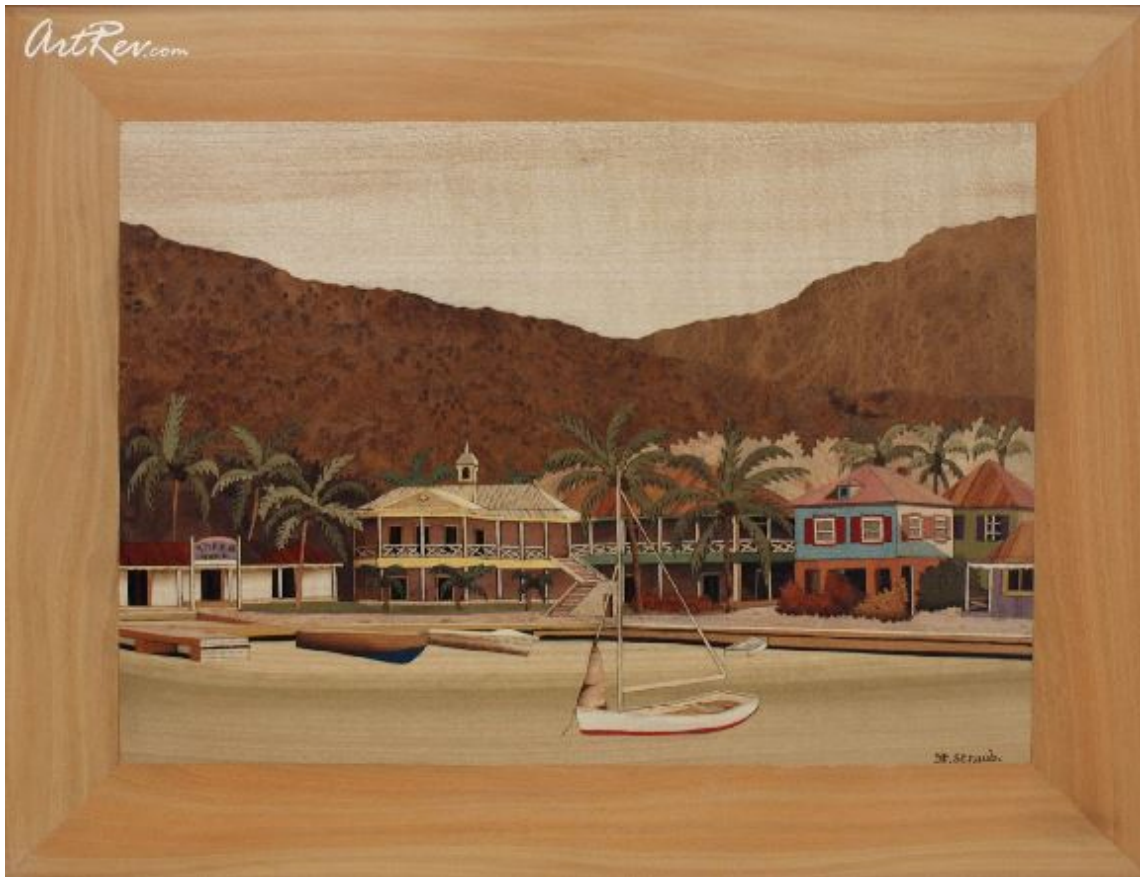


[Marina Tortola](#) , (circa 2017) by [Jean Pierre Straub](#)  
Original Marquetry - Main Subject: Cityscape



**Item Number**  
9679689338

**Retail Value**  
\$4,800

**ArtRev.com Price**  
\$3,600  
You Save 25% Off [-\$1,200.00]

**Dimensions (As Shown)**  
18.5W x 15.5H Inches  
46.99W x 39.37H cm

**Medium**  
Original Marquetry

## About Jean Pierre Straub

Jean-Pierre STRAUB has lived in St-Martin since 1992.

He was born in Strasbourg, in the fifties and was exposed to the art of inlaying wood from a very young age in his father's workshop. At that time, wood inlaying was used essentially to create and restore furniture. Having been immersed in this traditional woodworking skill from his early youth, Jean-Pierre very quickly found the need to diversify and broaden his creative skills so he turned to marquetry art.

His undisputable expertise in this field is the result of thirty-five years of experience combined with his unique talent and wonderful ability to draw, which pervades his composition. He has chosen a vast selection of veneers from all over the world to work with. Depending on their qualities, they make up his wood palette.

In Jean-Pierre's work we find combinations of several types of wood, not limited to: myrtle burl, red madrone, ebony, lemon tree, silver birch, tulip tree, rose wood, sycamore, walnut, palisander wood from the West Indies, maple and amboyna burl, French, Australian & African walnut.

He selects and combines every piece, each warm-toned color with such care and taste when creating his unique and hallmarked masterpieces.

## Original Marquetry

Marquetry (also spelled as marqueterie; from the French marqueteur, to varigate) is the art and craft of applying pieces of veneer to a structure to form decorative patterns, designs or pictures. The technique may be applied to case furniture or even seat furniture, to decorative small objects with smooth, venerable surfaces or to freestanding pictorial panels appreciated in their own right. Marquetry differs from the more ancient craft of inlay, or intarsia, in which a solid body of one material is cut out to receive sections of another to form the surface pattern. The word derives from a Middle French word meaning "inlaid work".

---

**Copyright Notice:** This document was generated on [ArtRev.com](https://www.artrev.com) on 2/23/2019 9:48:24 AM (U.S. Eastern Time Zone) - Copyright 2019 ArtRev.com, Inc. All Rights Reserved. The entire contents of this brochure is the property of ArtRev.com. You may not modify, copy, reproduce, republish, or distribute any portion of this brochure without the prior express written consent of ArtRev.com, Inc.

**Authenticity & Price Match Guarantee:** Shop with confidence. ArtRev.com is proud to be the first online art retailer to offer a "[lifetime authenticity guarantee](#)" with every limited edition or original work of art. Most limited edition and original artworks ship with a Certificate of Authenticity free of charge. This certificate is an official and valuable document that most insurance companies require in order to insure artworks against damage or theft. ArtRev.com will make every possible attempt to match or beat the advertised price of any major Internet competitor, art gallery, or frame shop; given that they are authorized to sell the item from the publisher or artist, and have the exact item in stock available for immediate sale.

**Pricing & Availability:** Due to the dynamic nature of the ArtRev.com website, prices and availability are subject to change without notice. ArtRev.com is not responsible for any pricing errors.